

## John & Betty Gray Scholarships

### For Professional Development in Childhood Care and Education

Qualifying individuals may be able to access scholarships to help pay for: trainings, conferences, community college, professional certificates, out of country degree evaluations and GED coursework and fees.

### How Do I Learn More?

- Attend a FREE training and get assistance with enrollment by coming to our monthly Oregon Registry class.
- Ask questions or request a free on-site training by calling Aubrey Sabin at 503-693-3233.
- Visit the Oregon Registry website at [www.centerline.pdx.edu](http://www.centerline.pdx.edu)
- Call the Oregon Center for Career Development in Childhood Care and Education toll free at 1-877-725-8535.



For appointments to learn more or to schedule a FREE training contact:

**Aubrey Sabin, M. Ed**  
Early Childhood Specialist  
503-693-3233  
Email: [Asabin@caowash.org](mailto:Asabin@caowash.org)

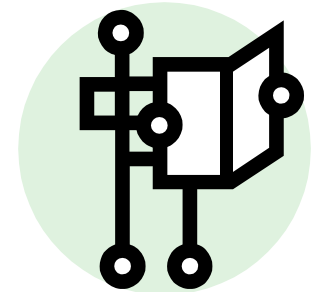
**Child Care Resource & Referral  
in Washington & Columbia  
Counties**

971-223-6100  
1-800-624-9516

A Member of  
Community Action Partnership  
Community Action's Mission:  
In partnership with the community,  
Community Action assists low-income  
people achieve self-determination.



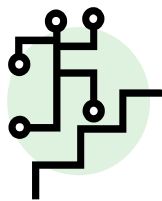
What is the  
Oregon Registry?



**Be Recognized For  
Your Achievements**

**Child Care Resource & Referral  
In Washington &  
Columbia Counties  
971-223-6100  
1-800-624-9516**

## The Oregon Registry



The Oregon Registry: Pathways to Professional Recognition in Childhood Care and Education is a way for you to document the training and education you have already acquired.

By enrolling in the Registry, you will be awarded a **Step**. Each of the 12 **Steps** represent achieving a certain amount of training hours and/or college credits across core knowledge categories in childhood care and education.

The Oregon Registry is also a tool for you as you continue your professional development. By enrolling, you will find your educational strengths and weaknesses.

**The Oregon Registry is not the Criminal Background Registry, Child Development Accreditation or Child Care Division Licensing. It is a separate program that focuses on professional development.**

## The Oregon Registry & You

### How Does the Registry Benefit Me?

As a child care provider, you do so much for your students, families, co-workers and community. This is a chance to be celebrated for the tremendous work you are doing!

- Be recognized as a professional
- Be recognized for the training and education you have already earned
- Easily show licensing specialists that you meet or exceed the training requirements for your position
- Enhance the quality of care for your children by having a well balanced understanding of core knowledge categories in childhood care and education
- Have a professional voice in the field of childhood care and education
- Continue your professional development in an organized manner

## Education Awards and Scholarships

Currently, funds are available to reward you for the education you have completed. Scholarships are also available for your continued development.

### Education Awards

If you are working in the field of childhood care and education, at least 20 hours a week, you may be awarded for the **Step** on the Oregon Registry that you have already achieved.

If you are in a licensed exempt or part-time/part-year facility, you may receive **\$50 for being at Step 3 or higher.**

If you are a Child Care Division (CCD) licensed or Department of Human Services (DHS) active provider you may receive:

**\$100 for reaching Step 3 — Step 6**

**\$250 for reaching Step 7 — Step 8.5**

**\$500 for reaching Step 9 or higher**